



**IND-EXPO CERTIFICATION LIMITED  
MANAGEMENT SYSTEMS CERTIFICATION SCHEME  
NON-CONFORMITY REPORT**

Name of Organization: The Surf

NC No. : 03 of 04

Section : Management

Team Leader : Mr. S L Ginige

Relevant Standard : ISO 22000

Auditor : Ms. F Weerawardena *L*

Relevant Clause : 7.2(i)

Date of audit : 2014-01-31

Relevant company document : PRP (Pest Control)

Non-conformity detected

Category : Major/Minor

No evidence was available to demonstrate that the chemical sprayed to eradicate pests is safe to be used in a food business organization.

Auditor

Team Leader :

Correction:

*MSDS will be obtained from the supplier*

*Mmesh*  
Auditee

*03-02-2014*  
Date

Root cause for Non-conformity

*Unawareness*

*Mmesh*  
Auditee

*03-02-2014*  
Date

Proposed corrective action

*MSDS have been obtained from the supplier*

Proposed date of completion:

*Mmesh*  
Auditee

*26-02-2014*  
Date

Verification of corrective action

*The corrective action taken is verified on the evidence provided*

NC Closed/~~Open~~

*A. L. J. J. J.*  
Auditor

*2014/03/01*  
Date

Effectiveness of corrective action

*The corrective action taken is verified as effective*

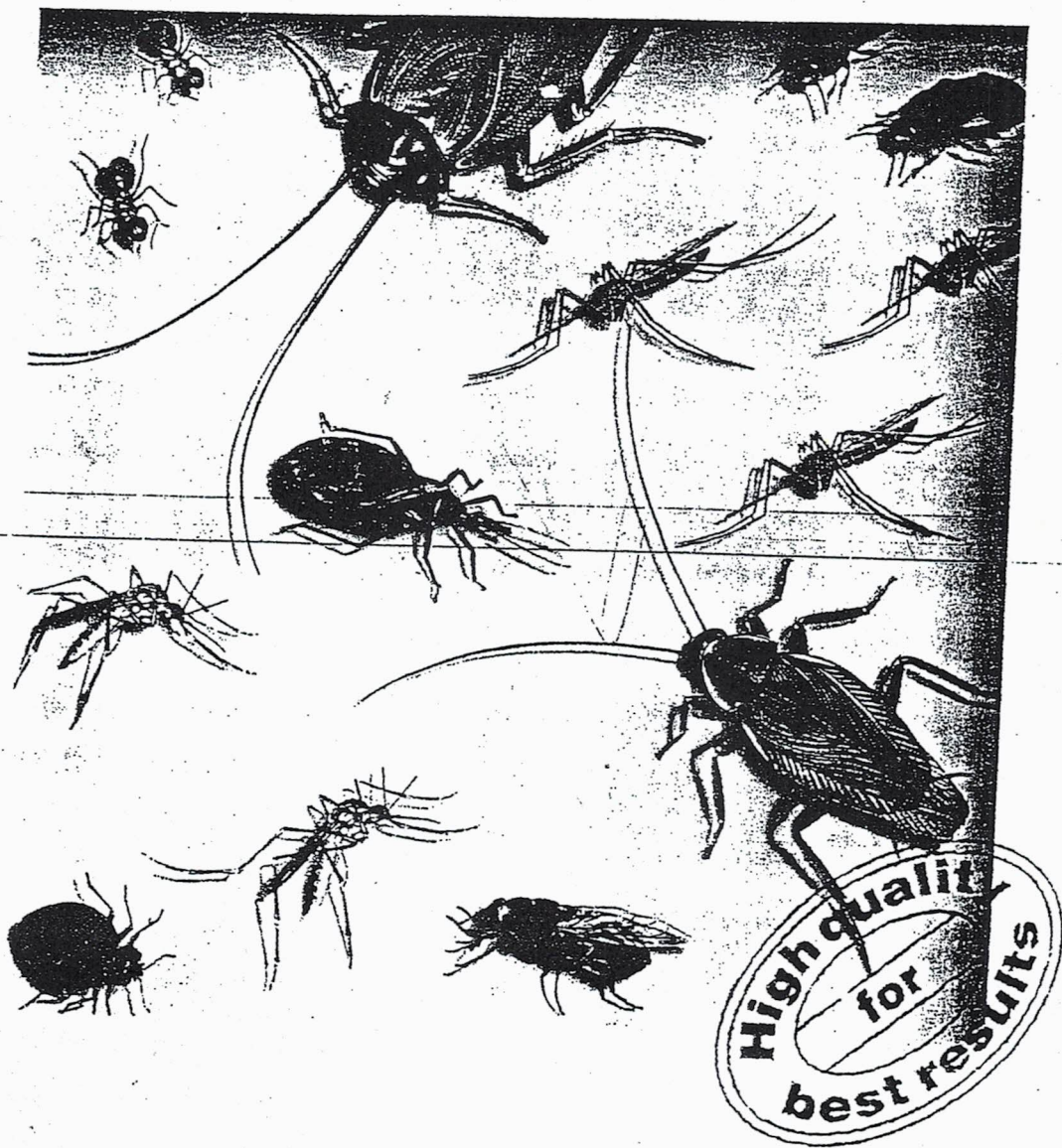
*A. L. J. J. J.*  
Auditor


*2015/05/30*  
Date



# Solfac<sup>®</sup>

The universal public health insecticide



**Bayer** 

1 & 2 PEST CONTROL  
No. 1721, Kundavalli Rd.  
Kilambur

# Solfac<sup>®</sup>

## Various customer-oriented formulations.

### Pest management is a complicated business

Mankind is plagued by a multitude of pests occurring in all conceivable situations ranging from swamps to kitchens and from stables to hospitals. In addition, safety and environmental considerations are becoming increasingly important and every pest problem requires individual strategy. Fortunately, there is a way out. In just about every case the answer to the problem is Solfac, which can be used safely, reliably, and effectively to avert the danger to public health.

### Pyrethroids – a model from nature

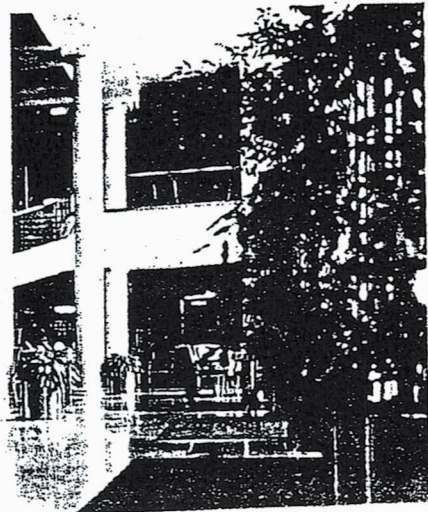
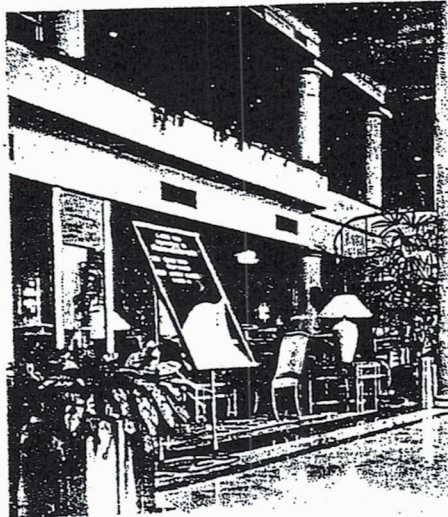
The insecticidal action of pyrethrum, a substance contained in the flowers of certain chrysanthemum species, has been known for more than a century. Pyrethrum has a relatively low toxicity for mammals, but kills arthropods very quickly. It does, however, have one distinct disadvantage: it is not stable in sunlight and decomposes very quickly.

Since the late 1940s various synthetic analogues of natural pyrethrum have been made. These substances known as the pyrethroids, have proved to have similar safety advantages as the natural product and to be still more effective against arthropods. The  $\alpha$ -cyano-pyrethroid cyfluthrin was developed in 1976 as a result of research carried out at BayerAG, and has been found to be equally effective against agricultural pests and public health pests.

### Approved for use just about everywhere

Cyfluthrin has undergone extensive safety studies. It has a low toxicity to plants, mammals, birds, and man and does not accumulate in the body. On the other hand, it is highly active, so that very small quantities are sufficient to hold pests in check. This combination of properties has led to the approval of Solfac products for use in virtually all relevant public health situations.

Extensive residue studies in stables, homes, and food-handling premises confirm



that Solfac is safe in such sensitive applications. Solfac formulations have been approved for use in homes, apartments, food-handling establishments, prisons, dairies, mills, hospitals, hotels, industrial buildings, offices, laboratories, livestock-housing establishments, kennels, nursing homes, schools, warehouses, and wineries, not forgetting various transport vehicles including aircraft, ships and buses, etc.

Solfac is sold in the USA under the name TEMPO and is currently under evaluation by the WHO under code No. OMS-2012.

### Effective against all public health insect pests

The active ingredient of Solfac is cyfluthrin, which has an extremely wide spectrum of action against insects and certain arachnids. Solfac is the only insecticide that answers all insect problems.

### Quick results

Solfac products act very quickly. In most cases the insects are knocked down within minutes, and pests hidden from view during application will often be flushed out of their hiding places and into contact with the treated surface. The results of the treatment are quickly evident.

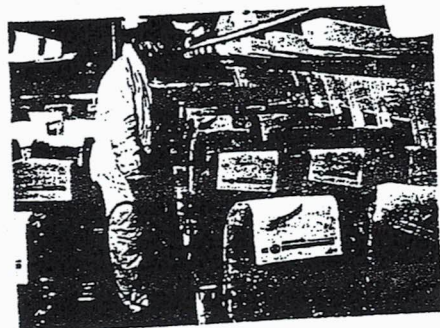
When it is applied as a ULV treatment, Solfac gives very fast knockdown of flying insect pests at extremely low rates of active ingredient.

### Long-term protection

Solfac is a very stable active ingredient. It is stable in ultraviolet light and tolerates alkaline conditions. This results in a long residual life of many weeks or months, depending on the application rate, on hygiene, and on the nature of the treated surfaces.

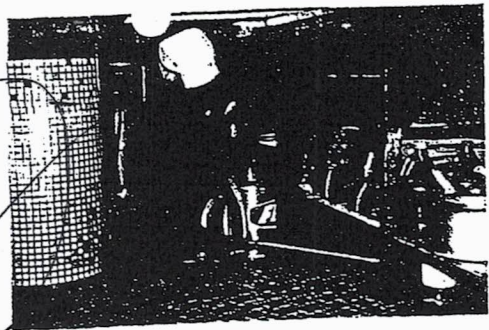
### Specialized formulations

Solfac is marketed in three different formulations to give optimal results in various situations. The choice of the right formulation is simple and is explained in the following pages.



**J & S PEST CONTROL**  
No.173/1, Kandavihara Rd,  
Kaluwamodara.

# Solfac<sup>®</sup> EW 050



## For sensitive areas.

### A water-based formulation

This is a 5% cyfluthrin oil-in-water emulsion formulation, which means that in the presence of water the active ingredient is enclosed within liquid polymer droplets. The result is an odourless liquid concentrate formulation of very low irritancy, particularly suitable for sensitive applications such as use in hospitals and restaurants. There are virtually no organic solvents which could give rise to unwelcome odours or staining problems, and the water carrier means that the product is not flammable and is easily stored and transported.

### Many uses - spraying, fogging or net impregnation

Solfac EW 050 is primarily used for residual spray applications, to walls, cracks and crevices, and other surfaces where pests may occur. In addition, Solfac EW 050 can be diluted in water and applied as a fog using thermal and mechanical fogging equipment. The use of water carrier means that the fog is very transparent, but the efficiency is the same as for thick fogs.

Recent work has brought to light another application for Solfac EW 050. The presence of the liquid polymer in the formulation has proved to be a major benefit when the product is used to impregnate mosquito bed nets. The polymer ensures that the active ingredient binds to the net fibres and resists washing. It also reduces irritancy problems encountered with certain net impregnation agents.

### Solfac<sup>®</sup> EC 050

In some countries Solfac is sold as a 5% EC formulation rather than as a 5% EW. The possibilities of application are similar, but the formulation has an odour and contains organic solvents, though these are greatly diluted when a working strength solution is made up in water.

### Note

Registered claims may differ from country to country. Always check the label on the locally available product to ensure that the proposed application is approved.

Situations	Pests	Product concentration	Comments	
Indoor and outdoor areas of:  • Commercial and industrial premises • Food-handling and processing establishments • Offices • Storerooms • Hospitals • Schools • Barracks • Homes • Hotels • Restaurants, bars • Ships, trains, buses • Aircraft and airports • Marketplaces • Warehouses and empty silos • Stables	Cockroaches Silverfish, ants Stored product pests Woodlice (slaters) Earwigs, Millipedes Crickets	Normal Rate 80 ml/10 l	Thoroughly spray possible hiding places (e.g. cracks and crevices, gaps behind stoves and sinks, cupboard interiors, areas around drains, rubbish bins, etc.) and other places where pests can occur with 50 ml of spray mixture per square metre. If hiding places are not directly accessible, spray a barrier around them. The spray deposits remain effective for months and therefore must not be washed off.	
	Ant and termite nests		Drench the nest with the mixture and spray the nest surface and the surrounding area.	
	Bedbugs		Wash all bedding and clothing. Spray hiding areas (e.g. behind pictures, in cracks and crevices, etc.) and bedframes.	
	Fleas		Clean or vacuum infested areas and dispose of all dust collected. Spray all infested areas, especially where pets sleep, as well as under furniture with 50ml of the spray mixture per square metre. Treat pets with a suitable flea control agent. Best results are achieved when applied in combination with IGR.	
	Material and fabric pests		Protect materials and fabrics from attack by spraying with 50 ml of the spray mixture per square metre.	
	Hide and skin pests ( <i>Dermestes spp.</i> )		Spray the back of each hide with 50 ml of the spray mixture per square metre (30-60ml per skin, depending on size) as it is placed in storage.	
	Spiders		Thoroughly spray spiders on webs and spray crevices in which spiders may be hiding. Do not remove the webs for a few days.	
	Ticks		Apply at the rate of 25 ml of the spray mixture per square metre on garden lawns and to other areas where ticks occur.	
	Flies Mosquitoes		Residual spray 60 - 120 ml/10 l	Spray 50 ml of the spray mixture per square metre in areas where flying insect pests rest, such as ceilings, girders, the sides of animal pens, around doors and windows, and the surrounding vegetation. N.B.: Simultaneous use of products controlling the larval stage as part of a many-pronged attack programme will give the best results as it will delay re-invasion. Livestock can be left in the stables during spraying, but feedstuffs, water, and feeding troughs should not be touched by the spray mixture. The higher rate will be required against flies in stables.
	Impregnated bed nets			Thermal fogging 20 ml/l
		1 ml/m <sup>2</sup>	Measure the size of the net and determine how many litres of water are absorbed when the net is immersed in water. Add the required quantity of Solfac EW 050 to the required volume of water and put the dry net in. Ensure that the net is evenly treated and lay it out horizontally to dry.	
Refuse dumps	Flies Cockroaches	40 ml/10 l	Spray at least 100 ml of the spray mixture over each square metre of the refuse.	

**J & S PEST CONTROL**  
No.173/1, Kandavibara Rd,  
Kaluwamodara,  
Aluthgama.

## General precautions.

Solfac products must be sold and distributed only in the original pack. They must be stored only in the tightly closed original container, under lock and key, in a cool, dry place, well away from foods and feedstuffs, and safely out of the reach of children.

Use only for pest control as directed on the label. Misuse will cause harm to health.

Do not spray on humans, animal livestock and pets, ornamental plants, foods and feeds. Carefully cover or remove foods and feeds before spraying. Cover aquaria and

switch off airpumps. After treatment rooms should be thoroughly ventilated.

Wear protective clothing. Do not breathe the spray mist. Do not smoke, eat or drink while handling and spraying the products. Do not swallow the concentrate or the diluted spray. Avoid contact with the skin.

Do not dispose of surplus spray liquid or unused insecticide in stagnant or flowing waters. All equipment used for mixing and applying these products must be thoroughly washed out afterwards with a detergent solu-

tion. Empty containers (packs) must be crushed and disposed of in a safe place.

After work, thoroughly wash hands, face and contaminated skin areas, using plenty of soap and water.

If signs of poisoning occur, due to careless handling or misuse of the products, summon a physician immediately. Symptomatic treatment, gastric lavage, saline laxatives. There is no known antidote.

Do not use organic solvents. Do not give the patient milk, oil or alcoholic beverages.

# Solfac<sup>®</sup>

The universal public health insecticide

Our technical information, whether given verbally or in writing, is based on extensive trials. To the best of our knowledge it is up to date, true, and accurate, but it is offered without warranty inasmuch as the conditions of use and storage are beyond

our control. Before using our products read and carefully observe the instructions, warnings, statements, and other information appearing on the product label.

Product descriptions and specifications do not contain any statement concerning the

Company's liability for possible damage. In all respects our conditions of sale apply.

Bayer 

Environmental Health

Klerat

syngenta

EC Safety Data Sheet

'KLERAT' PELLETS - WITH BITREX  
Version: 6

Last change: 30/01/02

Date of issue: 30/01/02

1. IDENTIFICATION OF SUBSTANCE/PREPARATION AND OF THE COMPANY/UNDERTAKING

Product name : 'KLERAT' PELLETS - WITH BITREX  
Company : Syngenta  
European Regional Centre  
Priestly Road  
Surrey Research Park  
Guildford  
Surrey  
GU2 7YH  
Phone number : (01483) 260000 Fax: (01483) 260001  
Emergency phone : (01484) 538444

2. COMPOSITION/INFORMATION ON INGREDIENTS

Product Description  
An anticoagulant rodenticide bait of cereal based pellets with bitrex.

EC-No. : 259-980-5 Brodifacoum

Hazardous ingredients	CAS-No.	Hazard symbols	Risk Phrases	Concentration
Brodifacoum (Classification according to Directive 67/548/EEC)	56073-10-0	T+,N	R27/28-R48/24/25- R50/53	0.005 % w/w

3. HAZARDS IDENTIFICATION

This material may cause mild irritation following eye contact, but is unlikely to cause skin irritation.

4. FIRST AID MEASURES

Symptoms of poisoning are typical of anticoagulants. In severe cases there may be bruising, haematomas of the joints, blood in the faeces and urine. An antidote, Vitamin K1 (phytonadione BP), should only be administered under the direction of a doctor who has access to a hospital laboratory. Doctors should refer to the leaflet 'The treatment of Anticoagulant Rodenticide Poisoning', 1988.

Eye contact : Immediately irrigate with eyewash solution or clean water, holding the eyelids apart, for at least 15 minutes. Obtain immediate medical attention.  
Skin contact : Take off immediately all contaminated clothing. Wash skin immediately with water, followed by soap and water. Such action is essential to minimise contact with skin. Contaminated clothing should be laundered before re-issue.  
Inhalation : Unlikely route of exposure.  
Remove patient from exposure, keep warm and at rest. Obtain medical attention as a precaution.  
Ingestion : ALL POISONED PATIENTS MUST BE TAKEN TO HOSPITAL

Safety Data Sheet

RODENT PELLETS - WITH BITREX  
Version: 6

Last change: 30/01/02

Date of issue: 30/01/02

IMMEDIATELY.  
Refer to the leaflet 'The Treatment of Anticoagulant  
Rodenticide Poisoning', 1988.  
Do not induce vomiting.

Medical advice  
Gastric lavage may be effective when performed within 4 hours of ingestion.  
Doctors should refer to the leaflet 'The treatment of Anticoagulant Rodenticide  
Poisoning', 1988.

5. FIRE FIGHTING MEASURES

Keep fire exposed containers cool by spraying with water.

Extinguishing media : For small fires, use foam, carbon dioxide or dry powder  
extinguishant. For large fires, use foam or water-fog;  
avoid use of water jet. Contain run-off water with, for  
example, temporary earth barriers.

Protective Equipment : A self contained breathing apparatus and suitable  
protective clothing should be worn in fire conditions.

6. ACCIDENTAL RELEASE MEASURES

Clean up  
methods : Sweep up and shovel into waste drums or plastic bags.  
Protect against dust. Wash the spillage area with water.  
Washings must be prevented from entering surface water  
drains.

Spillages or uncontrolled discharges into water courses must be alerted to the  
appropriate regulatory body.

7. HANDLING AND STORAGE

HANDLING

Read the label before use.

Safe handling  
advice

: Avoid all contact by mouth. Avoid contact with skin and  
eyes. When using do not eat, drink or smoke. Wash face and  
hands before eating, drinking or smoking. Prevent access to  
baits by domesticated animals.

STORAGE

Safe storage advice

: Keep locked up. Keep in original containers, tightly  
closed, out of reach of children. Keep away from food,  
drink and animal feeding stuffs.

Storage Life

Physically and chemically stable for at least 2 years when  
stored in the original unopened sales container at ambient  
temperatures.

J & S PEST CONTROL  
No.173/L. Kandavilam Rd.  
Kakuvamodara.  
Ajithgama.

Safety Data Sheet

ERAT PELLETS - WITH BITREX  
 Version: 6

Last change: 30/01/02

Date of issue: 30/01/02

8. EXPOSURE CONTROLS/PERSONAL PROTECTION

Personal protection

When using this product refer to the label for details.

Occupational exposure limits

Hazardous ingredient : Brodifacoum Syngenta OEL  
 8 hr TWA 0.002 mg/m<sup>3</sup>

Not applicable to field use.

9. PHYSICAL AND CHEMICAL PROPERTIES

Form : pellets  
 Colour : red  
 Odour : odourless  
 Melting point : Not available.  
 Boiling point : Not available.  
 Flash point : does not flash  
 Autoignition temperature : Not available.  
 Explosive properties : Non-explosive.  
 Vapour pressure : Not available.  
 Bulk density : 0.6 .. 0.7 g/ml  
 Solubility : insoluble in/with water  
 pH-value (quant.) : Not available.  
 Partition coeff. : Not applicable  
 Oxidizing properties : Non-oxidising

10. STABILITY AND REACTIVITY

Hazardous decomposition products

: Combustion or thermal decomposition will evolve toxic and irritant vapours.

11. TOXICOLOGICAL INFORMATION

ACUTE TOXICITY (LETHAL DOSES)

This health hazard assessment is based on a consideration of the composition of this product.

LD50 Oral rat : (calculated) > 5000 mg/kg  
 Low oral toxicity.

Dermal Median Lethal Dose rat : > 2000 mg/kg  
 Unlikely to be hazardous by skin absorption.

Inhalation

# Safety Data Sheet

syngenta

ERAT PELLETS - WITH BITREX  
Version: 6

Last change: 30/01/02

Date of issue: 30/01/02

Unlikely to cause harmful effects when handled and used as directed on the label.

## ACUTE TOXICITY (IRRITATION, SENSITIZATION ETC.)

Eye Irritation

: Slight/mild irritant to rabbit eyes.

Skin Irritation

: Non-irritant to rabbit skin.

## CHRONIC TOXICOLOGICAL EFFECTS / LONG TERM EXPOSURE

Long Term Exposure : No long term risks to man are associated with this material when handled and used as directed on the label.

## 12. ECOLOGICAL INFORMATION

### ENVIRONMENTAL FATE AND DISTRIBUTION

Inform. applies to : Brodifacoum  
The substance is essentially insoluble in water.  
The substance has low mobility in soil.

### PERSISTENCE AND DEGRADATION

Inform. applies to : Brodifacoum  
There is evidence of slow degradation in soil.

### ECOTOXICITY

Toxicity to fish : LC50 96 hours Rainbow trout  
: (calculated) > 1000 mg/l

Toxicity to daphnia : EC50 Daphnia magna  
: (calculated) > 1000 mg/l

Unlikely to be hazardous to aquatic life.  
Harmful to animals and birds.

## DISPOSAL CONSIDERATIONS

Do not contaminate ponds, waterways or ditches with chemical or used containers.  
Surplus material must be disposed of as detailed in the 'Guidelines for the avoidance, limitation and disposal of pesticide waste on the farm' GCPF, 1987.  
Empty containers should not be used for other purposes.  
Disposal should be in accordance with local, state or national legislation.

## TRANSPORT INFORMATION

Not Classified as Dangerous for Transport.

Safety Data Sheet

RAT PELLETS - WITH BIFENTHREN  
 Revision: 6

Last change: 30/01/02

Date of issue: 30/01/02

5. REGULATORY INFORMATION

Classification : Not Classified as Dangerous for Supply/Use.  
 Special label : Do not re-use container, keep tightly closed in a safe place.  
 (S054) See instructions for use supplied separately.  
 (D01) Wash substances from skin or eyes immediately.

The safety phrases have been assigned by Syngenta.  
 Users should ensure that they comply with any relevant local, state or national legislation.

6. OTHER INFORMATION

Use: : A rat and mouse bait.

is the property of a Syngenta Group company.  
 Read the label before you buy: use pesticides safely.

This data sheet was prepared in accordance with Directive 91/155/EEC (93/112/EC, 2001/58/EC)

The information on this sheet is not a specification, it does not guarantee specific properties. The information is intended to provide general guidance as to health and safety based upon our knowledge of the handling, storage and use of the product. It is not applicable to unusual or non-standard uses of the product nor where instructions or recommendations are not followed.

A vertical bar (|) in the left margin indicates an amendment from the previous version.

**J & S PEST CONTROL**  
 No.173/1, Kandavihara Rd,  
 Kaluwamodara,  
 Aluthgama.

50+ years of  
Agrisolutions

**ZAGRO**

Insecticide

31.P1.1240

**ZaZaFly**

ZaZaFly is a granular bait which kills flies and cockroaches effectively. Recommended for public hygiene use. ZaZaFly is a registered product with Singapore National Environment Agency.



#### Indication

ZaZaFly is an insecticide, effective for fly and cockroach control, both indoor and outdoor. It is a strong oral poison, with contact and stomach action. ZaZaFly contains attractant that encourages flies and cockroaches to crowd around the granules and feed. After ingestion, it causes rapid knockdown and has good residual activity.

#### Composition And Description

Each kg contains :  
Azamethipos 1% G

#### Direction For Use

##### Recommendations for Controlling Flies & Cockroaches

Apply ZaZaFly very lightly approximately 200g per 100m<sup>2</sup> of ground surface on areas frequented by flies, e.g. floor, pathways, window sills, partitions, or place ZaZaFly in a shallow container (carton, etc). Replace ZaZaFly as soon as it is covered with dust, dead flies or dead cockroaches. Apply fresh ZaZaFly when old bait is dissolved or has been cleaned away.

Distribute ZaZaFly from container or use measuring cup.

Keep container tightly closed between uses. ZaZaFly does not control blood-sucking flies.

#### Precaution

For public health use only

#### Storage

Store in a cool and dry place. Avoid direct heat and sunlight.

**J & S PEST CONTROL**  
No.173/1, Kandavihara Rd,  
Kaluwamodara,  
Aluthgama.

**J & S PEST CONTROL**  
No.173/1, Kandavihara Rd

GMP certified  
ISO 9001:2000 certified  
ISO 17025 accredited

10/10/10



50+ years of  
Agrisolutions

**ZAGRO**

Insecticide

31.P1.1240

**ZaZacron**

ZaZacron, a wettable powder formulation, which effectively kills flies and cockroaches. Recommended for public hygiene use. ZaZacron is registered product with Singapore National Environment Environment Agency.

#### Indication

ZaZacron is a wettable insecticide, effective for fly and cockroach control, both indoor and outdoor. It is commonly employed as a spray or paint. ZaZacron works by the inhibition of enzymes, therefore interrupting the transmission of nerve impulses in flies and cockroaches, resulting in immediate death. It gives rapid knockdown, and has good residual activity.

#### Composition And Description

Each kg contains :  
Azamethipos 10% WP

#### Direction For Use

##### Recommendations for Controlling Flies & Cockroaches

For spray, dissolve 500g of ZaZacron into 4 litres of water and apply to approximately 100m<sup>2</sup>.  
For paint, mix 500g of ZaZacron with 500 cm<sup>3</sup> water and apply to approximately 10m<sup>2</sup>.  
Ensure a homogeneous solution before application.



**J & S PEST CONTROL**  
No.173/1, Kandavihara Rd,  
Kaluwamodara,  
Aluthgama.

**Precaution**  
For public health use only

**Storage**  
Store in a cool and dry  
place. Avoid direct heat  
and sunlight.

**J & S PEST CONTROL**  
No.173/1, Kandavihara Rd

Handwritten marks or scribbles in the top right corner.



*MSDS file***1. IDENTIFICATION OF THE SUBSTANCE/PREPARATION AND COMPANY/UNDERTAKING****PRODUCT NAME: KLERAT WAX BLOCKS, - WITH BITREX****Address/Phone No. :** Fernhurst  
Haslemere  
Surrey  
GU27 3JE  
(01428) 644061**Emergency Phone No.:** (01622) 814777**2. COMPOSITION/INFORMATION ON INGREDIENTS****PRODUCT DESCRIPTION**

An anticoagulant rodenticide bait consisting of paraffin wax blocks with bitrex.

**Product Code :** 65080/65467  
**EEC No. :** 259-980-5 : brodifacoum

HAZARDOUS INGREDIENT(S)	CAS No.	%(w/w)	Symbol	R Phrases
Brodifacoum	056073-10-0	0.005	T+	R27/28 R48/24/25

**3. HAZARDS IDENTIFICATION**

Unlikely to cause harmful effects under normal conditions of handling and use.

**J & S PEST CONTROL**  
No.173/1, Kandavihara Rd,  
Kaluwamodara,  
Aluthgama.

---

PRODUCT NAME: KLERAT WAX BLOCKS - WITH BITREX

---

#### 4. FIRST-AID MEASURES

Symptoms of poisoning are typical of anticoagulants. In severe cases there may be bruising, haematomas of the joints, blood in the faeces and urine. An antidote, Vitamin K1 (Phytomenadione BP), should only be administered under the direction of a doctor who has access to a hospital laboratory. Doctors should refer to the leaflet 'The treatment of Anticoagulant Rodenticide Poisoning', 1988.

**Inhalation** : Unlikely to be hazardous by inhalation unless heated. Remove patient from exposure, keep warm and at rest. Obtain medical attention as a precaution.

**Skin Contact** : Unlikely to cause harmful effects under normal conditions of handling and use. Take off immediately all contaminated clothing. Wash skin immediately with water, followed by soap and water. Such action is essential to minimise contact with skin. Contaminated clothing should be laundered before re-issue.

**Eye Contact** : Immediately irrigate with eyewash solution or clean water, holding the eyelids apart, for at least 10 minutes. Obtain immediate medical attention.

**Ingestion** : ALL POISONED PATIENTS MUST BE TAKEN TO HOSPITAL IMMEDIATELY. Refer to the leaflet 'The Treatment of Anticoagulant Rodenticide Poisoning', 1988. Do not induce vomiting.

#### Further Medical Treatment

Gastric lavage may be effective when performed within 4 hours of ingestion.

Doctors should refer to the leaflet 'The treatment of Anticoagulant Rodenticide Poisoning', 1988.

---

#### 5. FIRE-FIGHTING MEASURES

Keep fire exposed containers cool by spraying with water.

**Extinguishing Media**

: For small fires, use foam, carbon dioxide, dry powder or halon extinguishant. For large fires, use foam or water-fog; avoid use of water jet. Contain run-off water with, for example, temporary earth barriers.

**Fire Fighting Protective Equipment** : A self contained breathing apparatus and suitable protective clothing should be worn in fire

PRODUCT NAME: KLERAT WAX BLOCKS - WITH BITREX

conditions.

#### 6. ACCIDENTAL RELEASE MEASURES

Sweep up and shovel into waste drums or plastic bags. Protect against dust. Wash the spillage area with water. Washings must be prevented from entering surface water drains. Spillages or uncontrolled discharges into watercourses must be alerted to the appropriate regulatory body.

#### 7. HANDLING AND STORAGE

##### 7.1 HANDLING

Read the label before use. Avoid all contact by mouth. Wash hands and exposed skin after use. Avoid contact with eyes. When using do not eat, drink or smoke. Wash face and hands before eating, drinking or smoking. Prevent access to baits by domesticated animals.

##### 7.2 STORAGE

Keep locked up. Keep in original containers, tightly closed, out of reach of children. Keep away from food, drink and animal feeding stuffs. Storage Life : Physically and chemically stable for at least 2 years when stored in the original unopened sales container at ambient temperatures.

#### 8. EXPOSURE CONTROLS/PERSONAL PROTECTION

When using this product refer to the label for details.

##### Occupational Exposure Limits

##### HAZARDOUS INGREDIENT(S)

Brodifacoum

LTEL 8hr TWA  
ppm mg/m3

0.002

STEL  
ppm mg/m3

COM

Not applicable to field use.

**J & S PEST CONTROL**

No.173/1, Kandavihara Rd,

Kaluwamodara,

Aluthgama.

(Revision: 01)

**S PEST CONTROL**

(Date: 1194)

(Page: )

---

PRODUCT NAME: KLERAT WAX BLOCKS - WITH BITREX

---

9. PHYSICAL AND CHEMICAL PROPERTIES

Form	: waxy solid
Colour	: dark blue
Odour	: odourless
pH (Value)	: Not available.
Boiling Point (Deg C)	: Not available.
Melting Point (Deg C)	: >50
Flash Point (Deg C)	: does not flash
Auto Ignition Temperature (Deg C)	: Not available.
Explosive Properties	: Not applicable.
Oxidising Properties	: Not applicable.
Vapour Pressure (mm Hg)	: Not available.
Density (g/ml)	: 1.25
Solubility (Water)	: insoluble
Partition Coefficient	: Not available.

---

10. STABILITY AND REACTIVITY

Hazardous Decomposition Product(s) : Combustion or thermal decomposition will evolve toxic and irritant vapours.

---

11. TOXICOLOGICAL INFORMATION

Inhalation : Unlikely route of exposure.

Skin Contact : By consideration of the components of this mixture it is unlikely to be irritant and harmful in contact with skin.  
Dermal Median Lethal Dose (>2000mg/kg) (rabbit).

Eye Contact : Unlikely to cause eye irritation.

Ingestion : Low oral toxicity.  
Oral Median Lethal Dose (approx 10g/kg) (rat).

Long Term Exposure : No long term risks to man are associated with the normal handling and use of this material.

---

12. ECOLOGICAL INFORMATION

Toxicity  
Harmful to livestock.

---

PRODUCT NAME: KLERAT WAX BLOCKS - WITH BITREX

13. DISPOSAL CONSIDERATIONS

Do not contaminate ponds, waterways or ditches with chemical or used containers. Surplus material must be disposed of as detailed in the 'Guidelines for the avoidance, limitation and disposal of pesticide waste on the farm' GIFAP, 1987. Empty containers should be washed and discarded. Empty containers should not be used for other purposes. Disposal should be in accordance with local, state or national legislation.

14. TRANSPORT INFORMATION

Not Classified as Dangerous for Transport.

15. REGULATORY INFORMATION

Not Classified as Dangerous for Supply/Use.

The safety phrases have been assigned by ZENECA Agrochemicals. Users should ensure that they comply with any relevant local, state or national legislation.

EEC Classification : Under the Classification, Packaging and Labelling of Dangerous Substances Regs, 1984, this material is not dangerous for supply or conveyance.

Safety Phrases : S053: Do not reuse container, keep tightly closed in a safe place.  
S054: See instructions for use supplied separately.  
D01: Wash substances from skin or eyes immediately.

16. OTHER INFORMATION

This data sheet was prepared in accordance with Directive 93/112/EC.

Use : A rat and mouse bait.

KLERAT is the property of a ZENECA Group company.  
Read the label before you buy: use pesticides safely.

The information on this sheet is not a specification, it does not guarantee specific properties. The information is intended to provide general guidance as to health and safety based upon our knowledge of the handling, storage and use of the product. It is not applicable to unusual or non-standard uses of the product nor where instructions or recommendations are not followed.

(Revision: 01)

(Date: 1194)

(Page: 5)

J & B PEST CONTROL  
No. 173/1, Kandavilvara Rd,  
Kahiwamodara,  
Ahhigama.

---

PRODUCT NAME: KLERAT WAX BLOCKS - WITH BITREX

---

#### GLOSSARY

- OES : Occupational Exposure Standard (UK HSE EH40)  
MEL : Maximum Exposure Limit (UK HSE EH40)  
COM : The company aims to control exposure in its workplace to this limit  
TLV : The company aims to control exposure in its workplace to the ACGIH  
limit  
TLV-C: The company aims to control exposure in its workplace to the ACGIH  
Ceiling limit  
MAK : The company aims to control exposure in its workplace to the German  
limit  
Sk : Can be absorbed through skin  
Sen : Capable of causing respiratory sensitisation